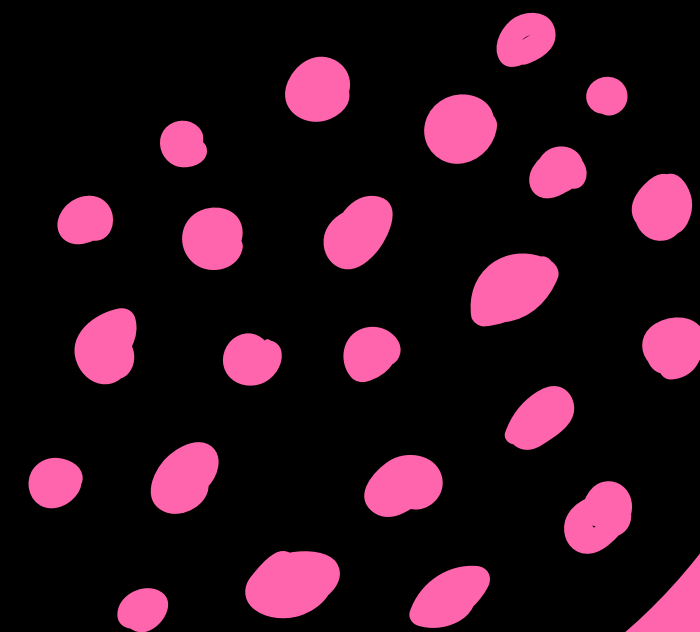


STITCH THE GAP



Tracy Purdie

Sewing Machine Mechanic

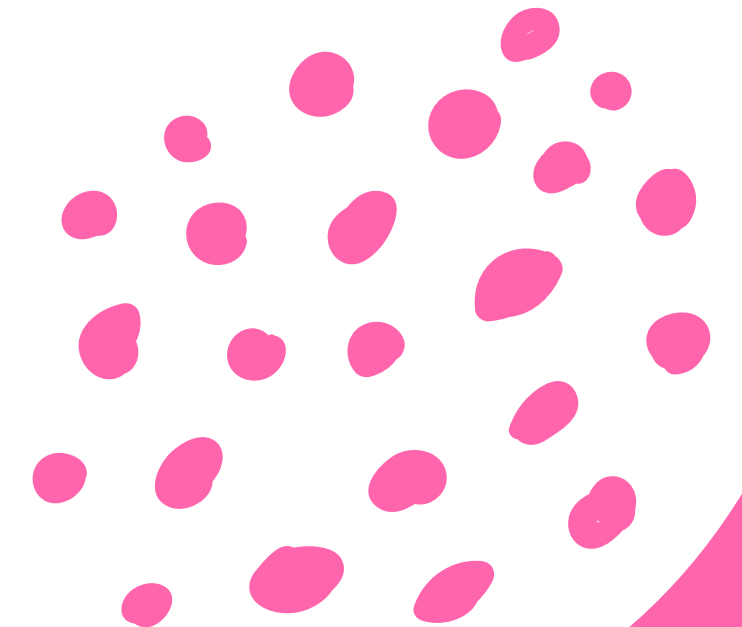
Stitch the Gap

3 McBride Ave
Kirkintilloch
Glasgow
G66 1XP



sales@stitchthegap.com

<https://www.stitchthegap.com>



A wee bit about me!

- Left school at 15
- Attended Barmulloch College
– sewing machine mechanics
- One of only 4 female mechanics in the whole of the UK
- How privileged are YOU!!



What we hope to cover today

This will be a summary of almost 40 years of experience in an afternoon – you've got to start somewhere!

I know I don't look old enough!

- We will look at 3 different machines – 2 domestic & 1 overlocker
- You will be given the task of identifying faults (promise this is not a test!)
- We will work through the solutions for each
- Any questions, please ask away throughout, as this will be interactive learning in action!

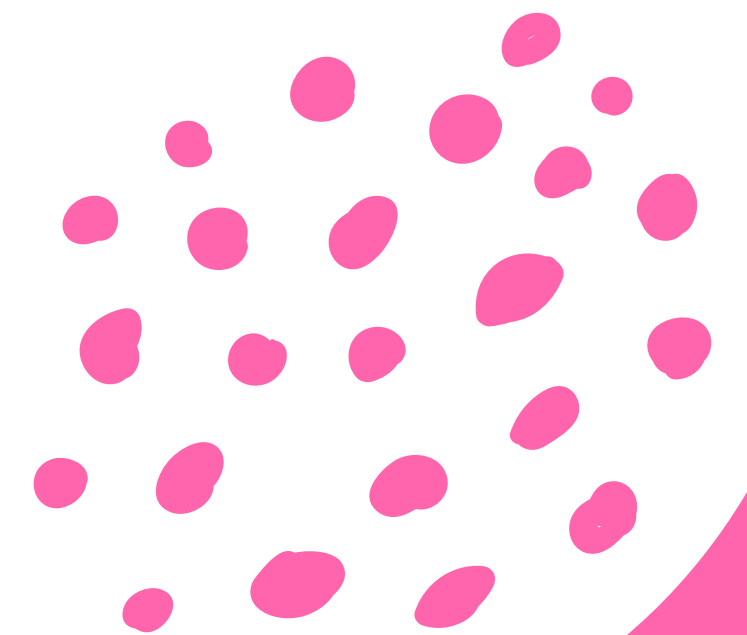
Common Issues

I wanted to demonstrate some common issues that crop up when dealing with sewing machines – this is not exhaustive but it's certainly a good place to start

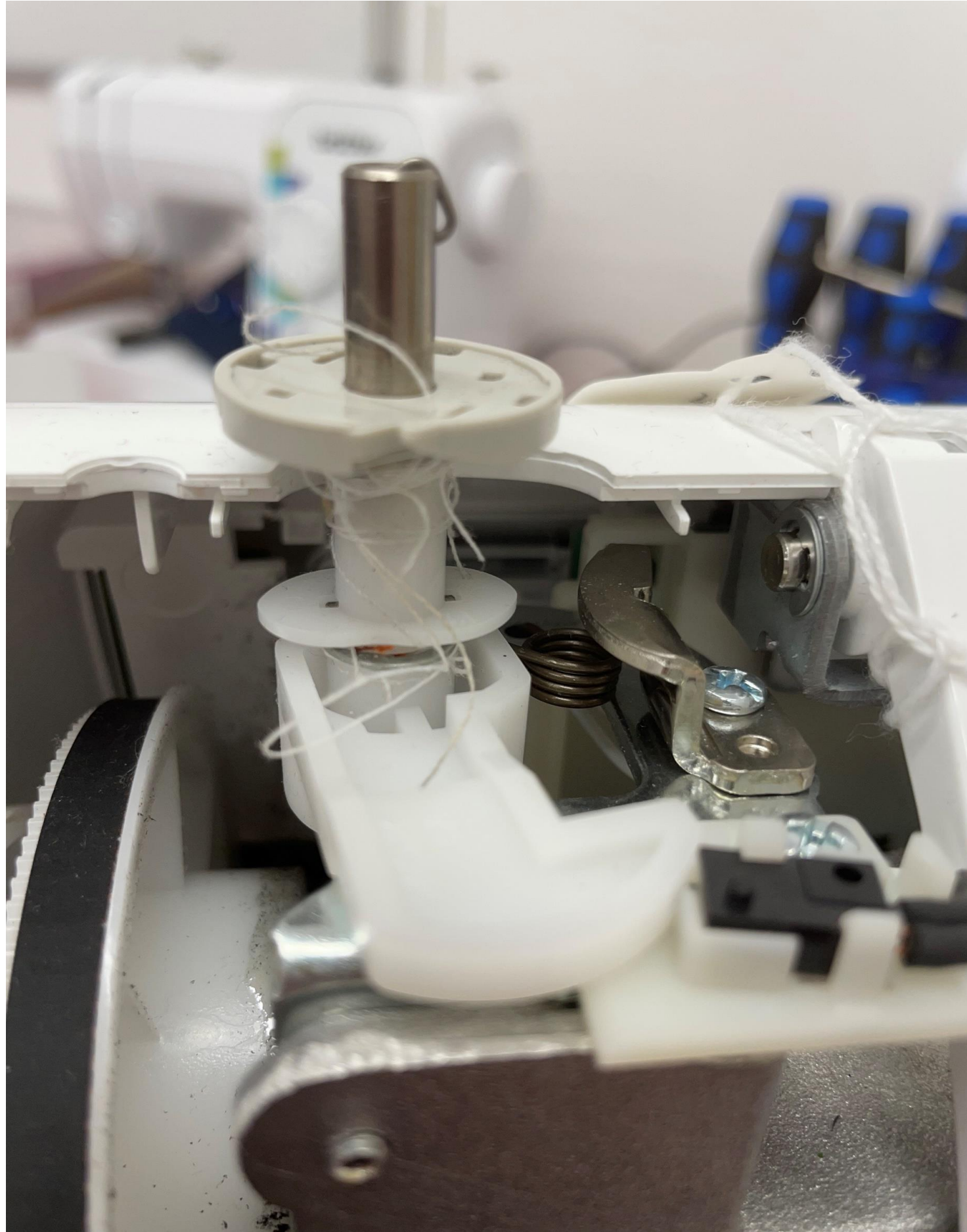
THREADS!



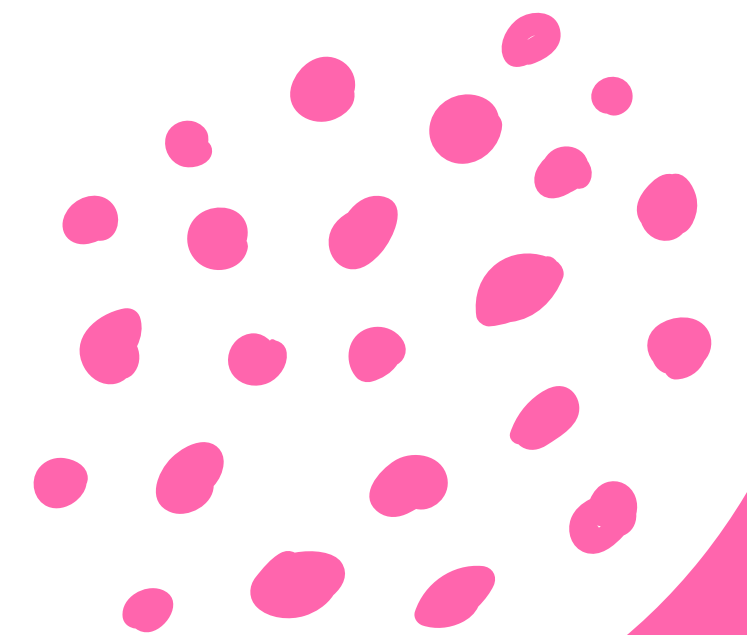
Thread has become wrapped around the underside of the take up lever



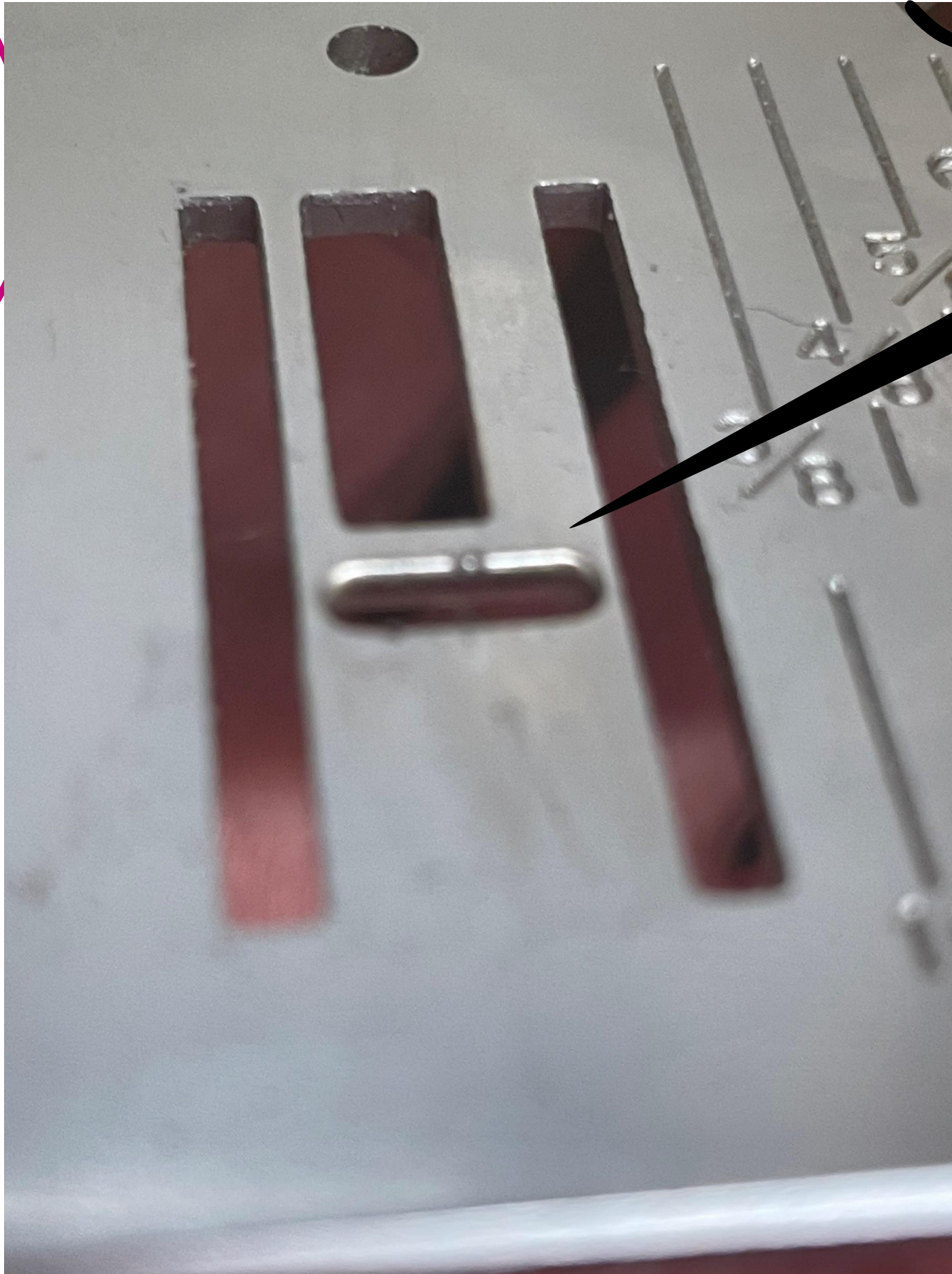
THREADS...



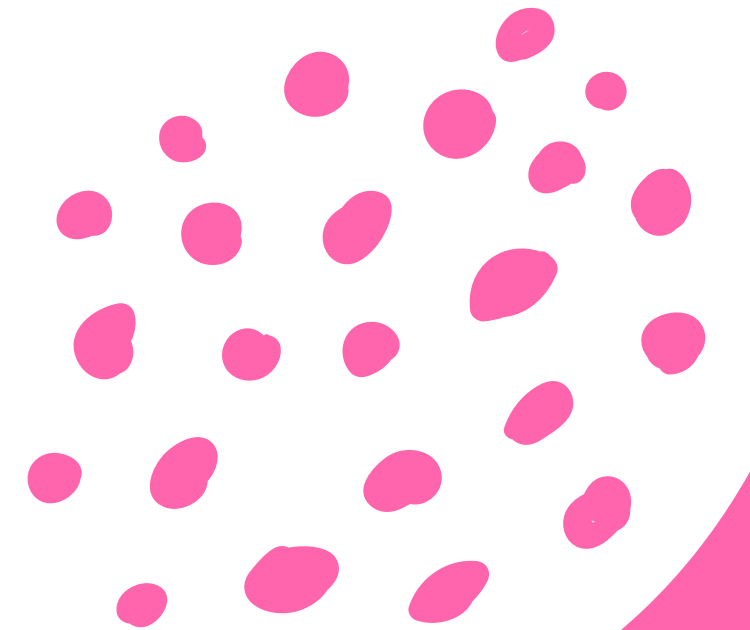
Thread has become wrapped around the underside of the Bobbin Winder



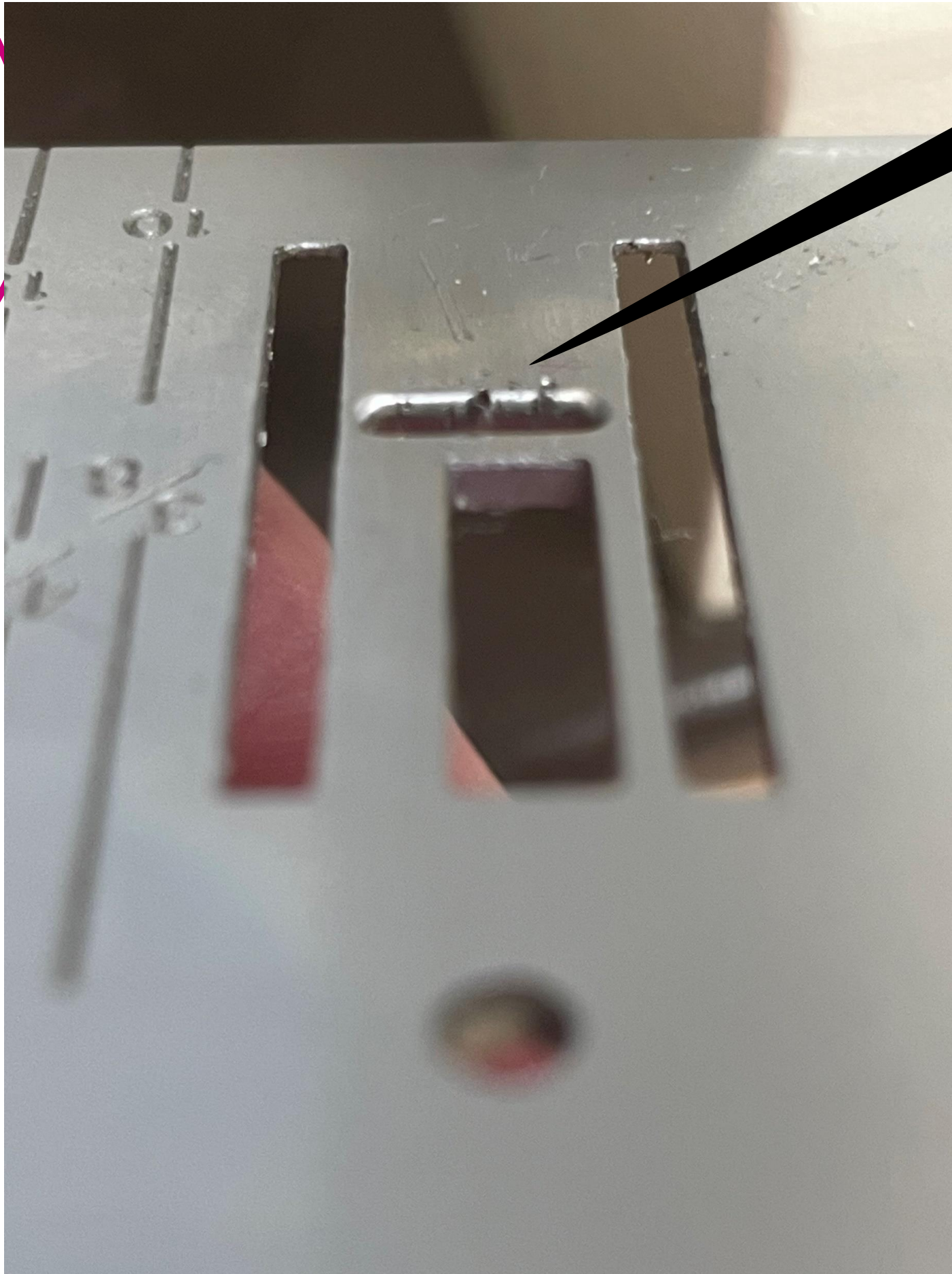
Needle Plate



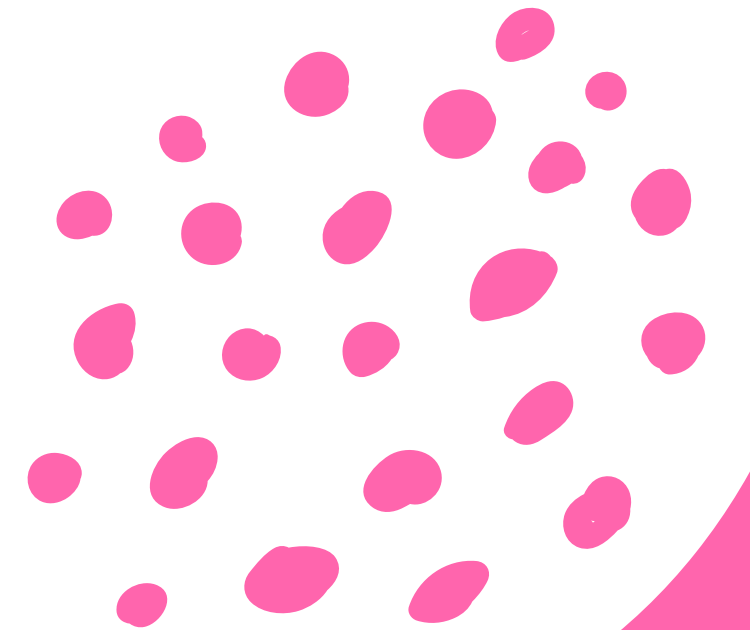
Note the gouge in this one



Needle Plate



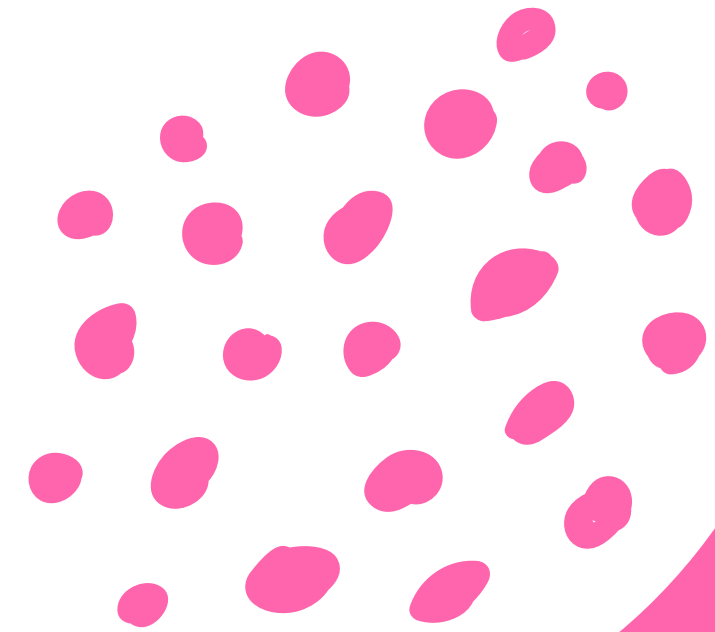
Same plate - Different angle



Rotary Hook



A lot of issues are caused by dust and debris



Rotary Hook

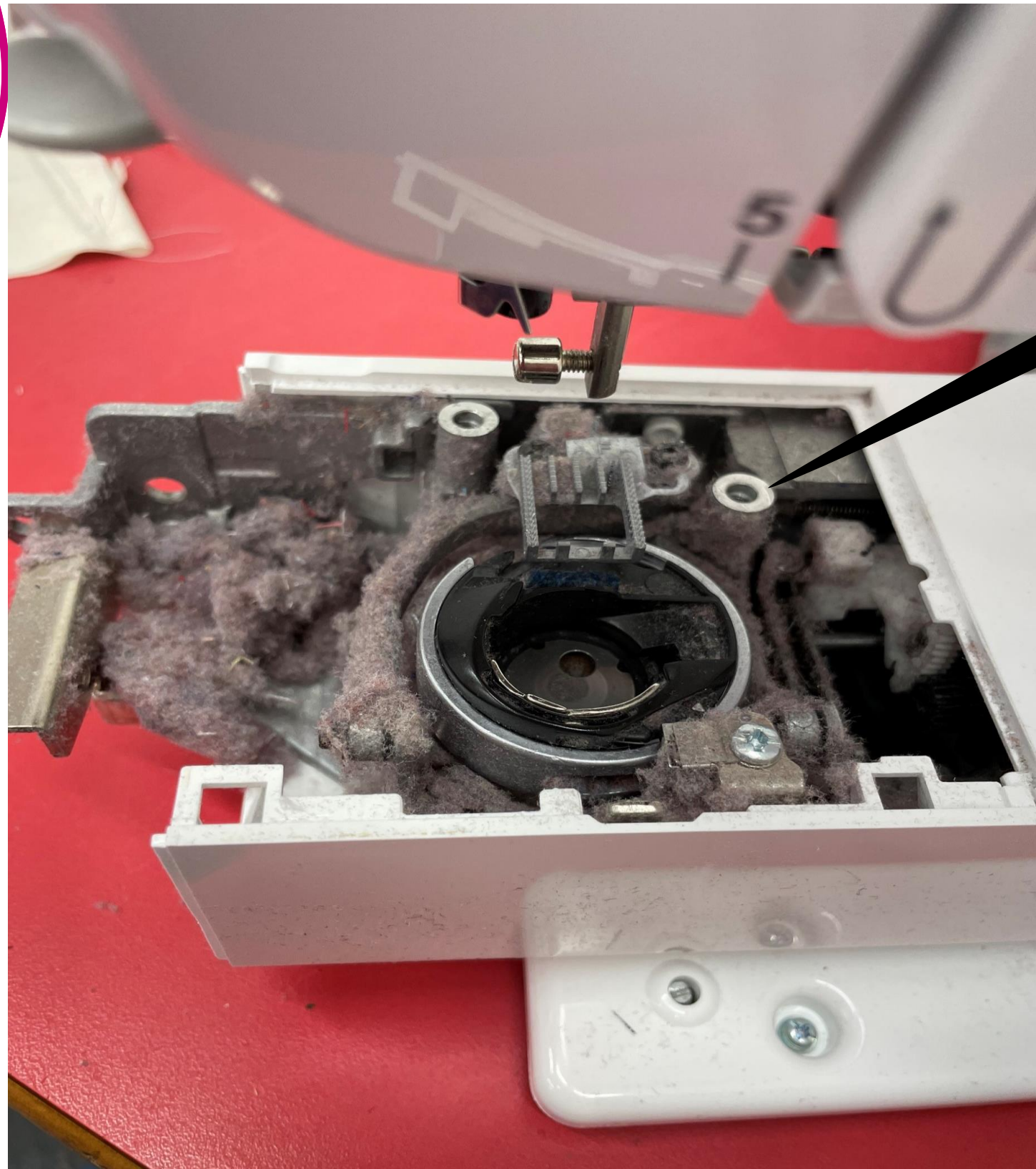


Close up of the hook from an oscillating shuttle

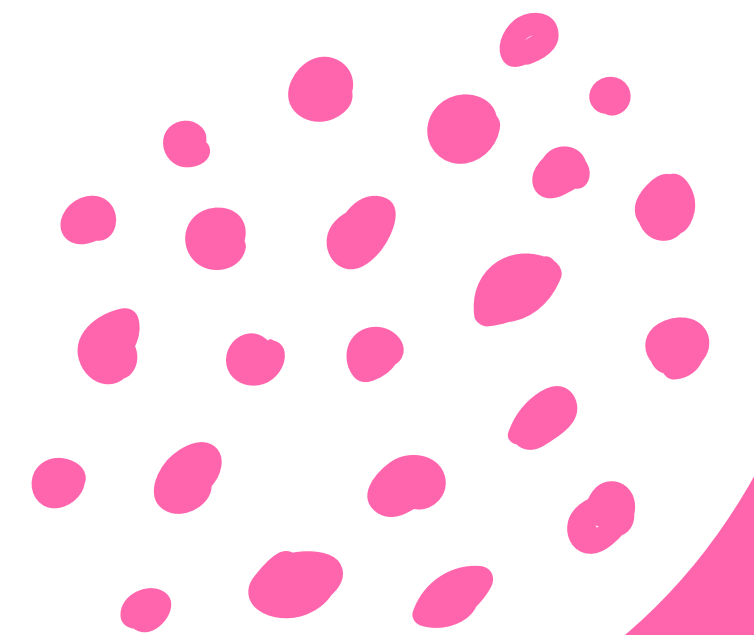
You can see scuffs and rags on this hook



Build up of dirt in the machine



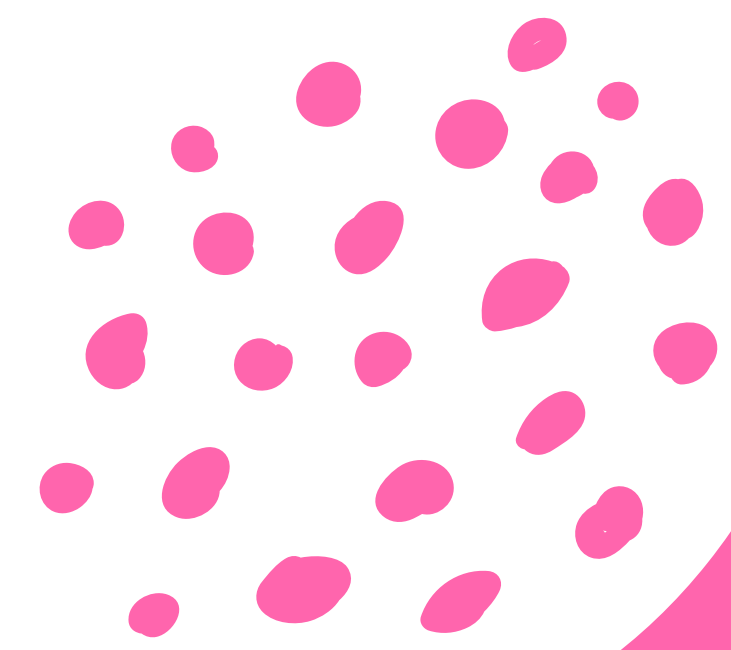
This causes A LOT of issues!



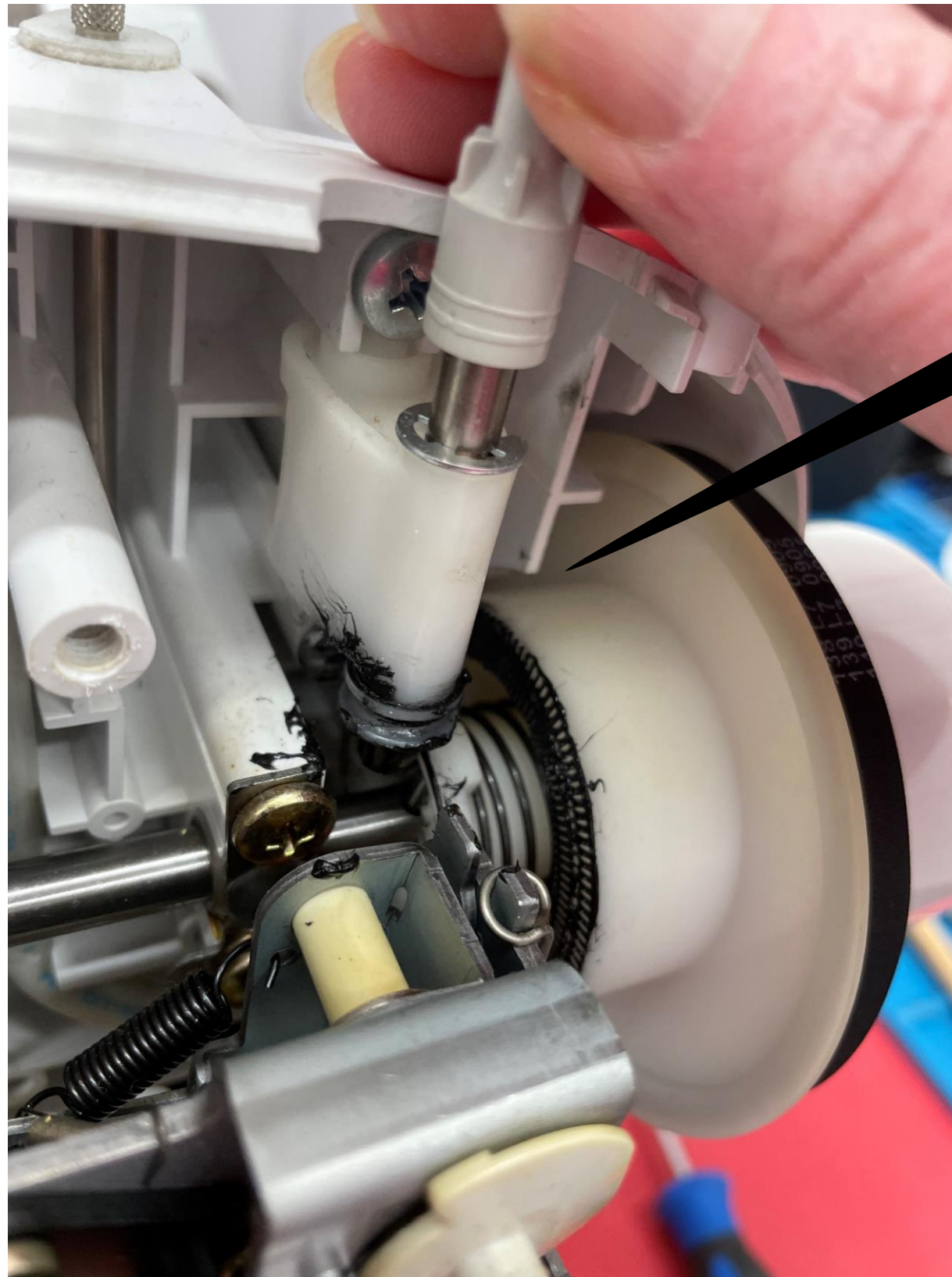
...and it gets in lots of places!



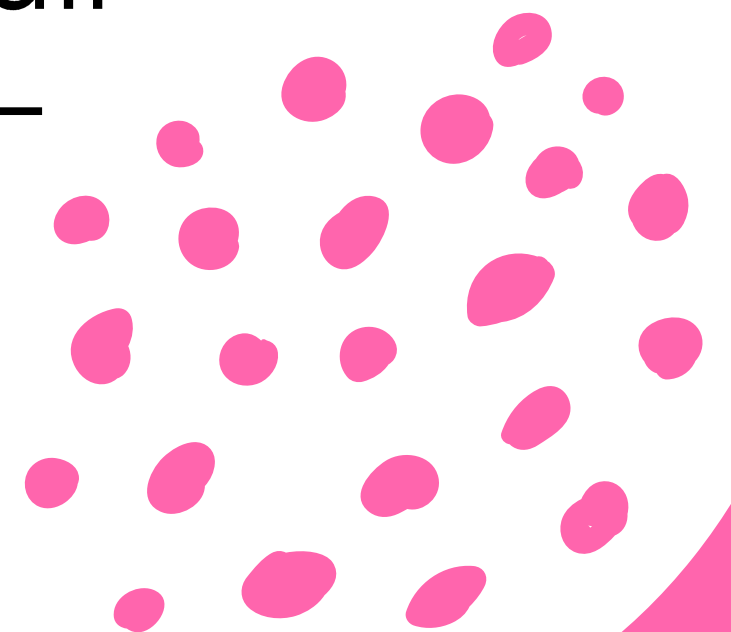
In the gears too!



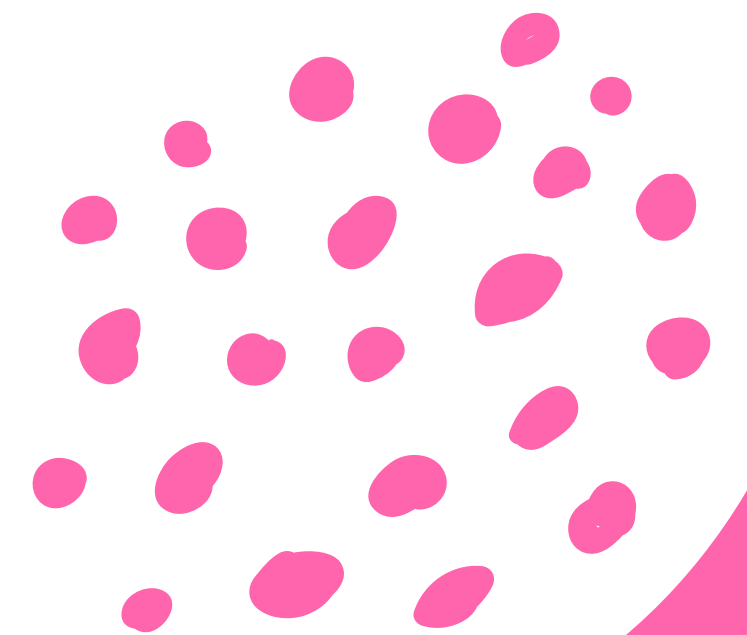
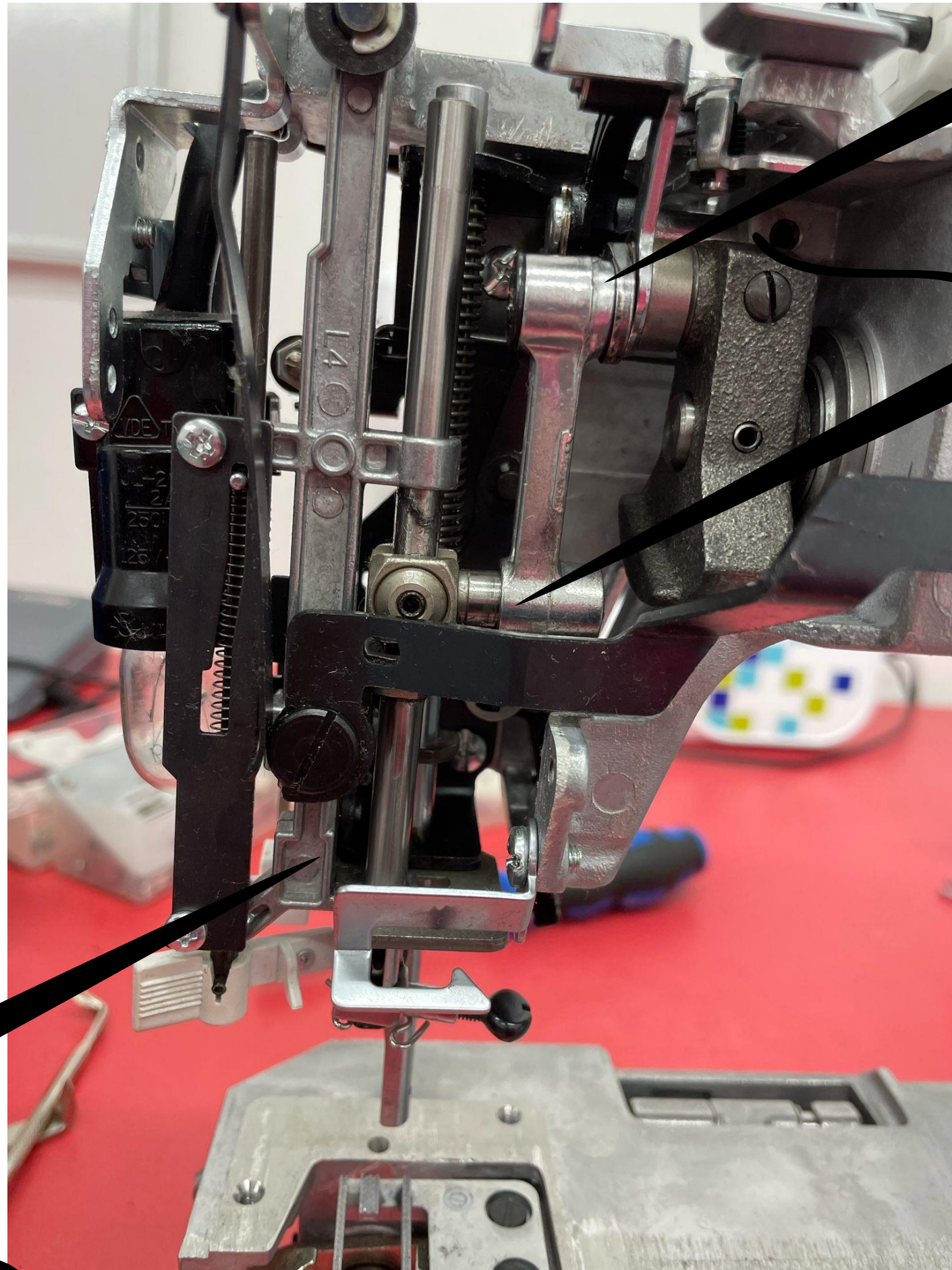
WD40 – STOP!



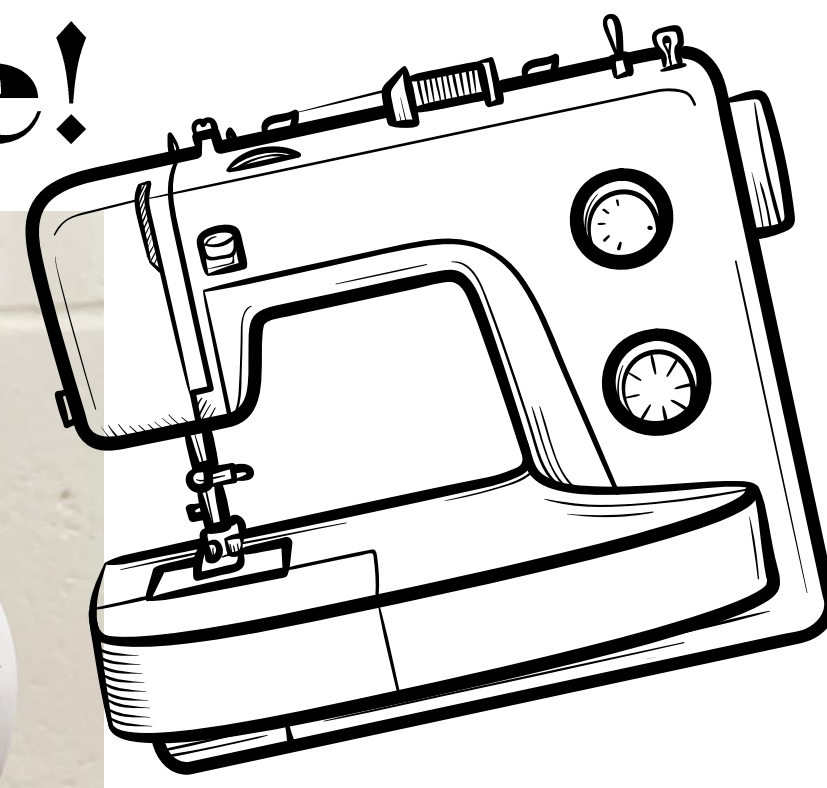
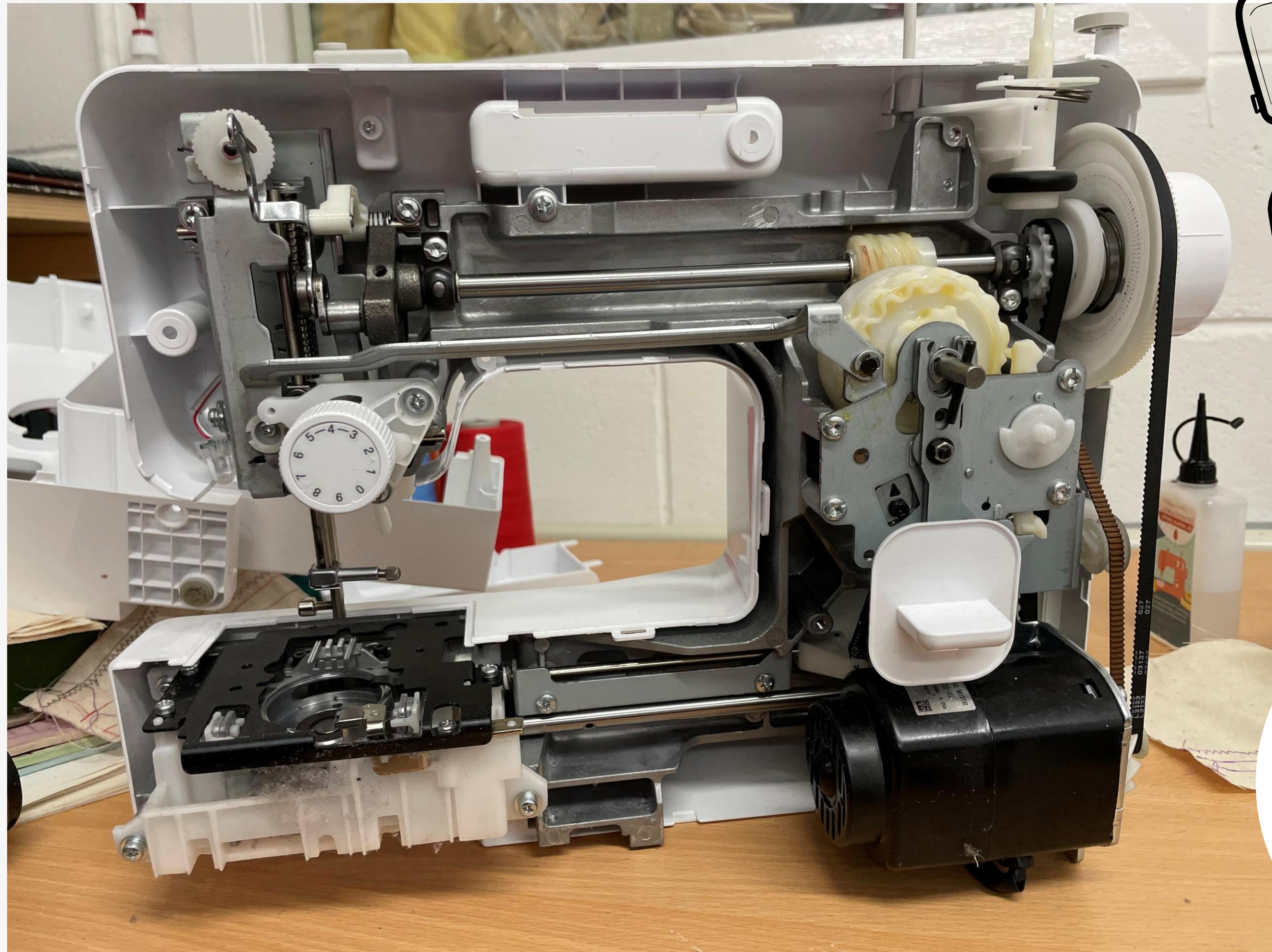
A drop of sewing machine oil is all that you need - NEVER WD40!



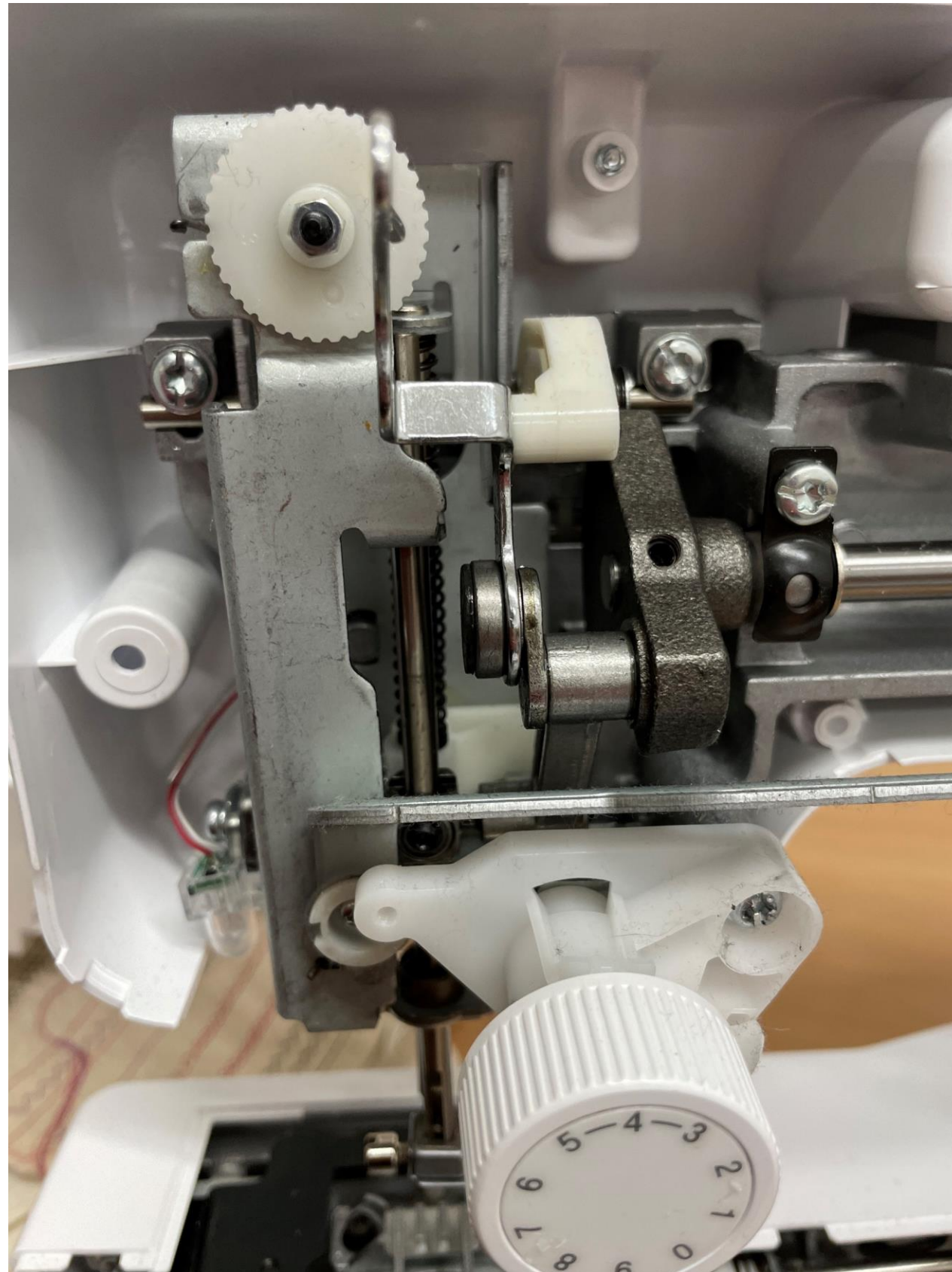
Oil Points



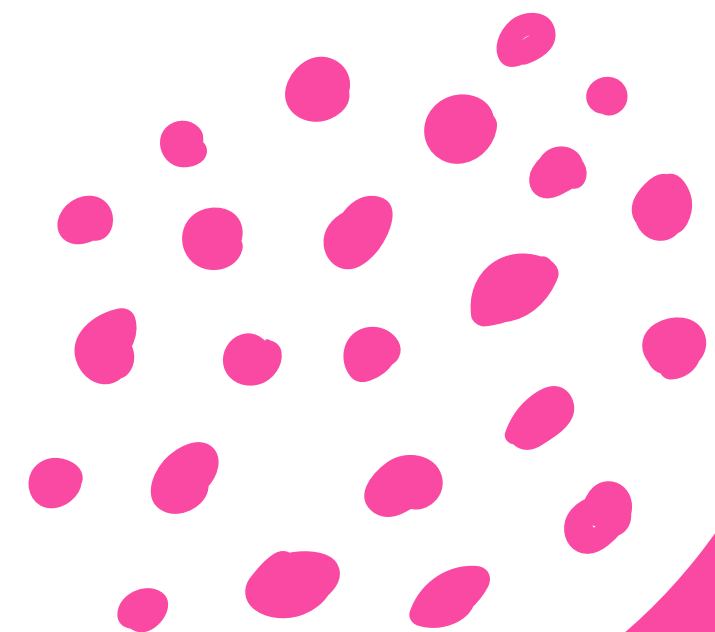
Inside the Sewing Machine!



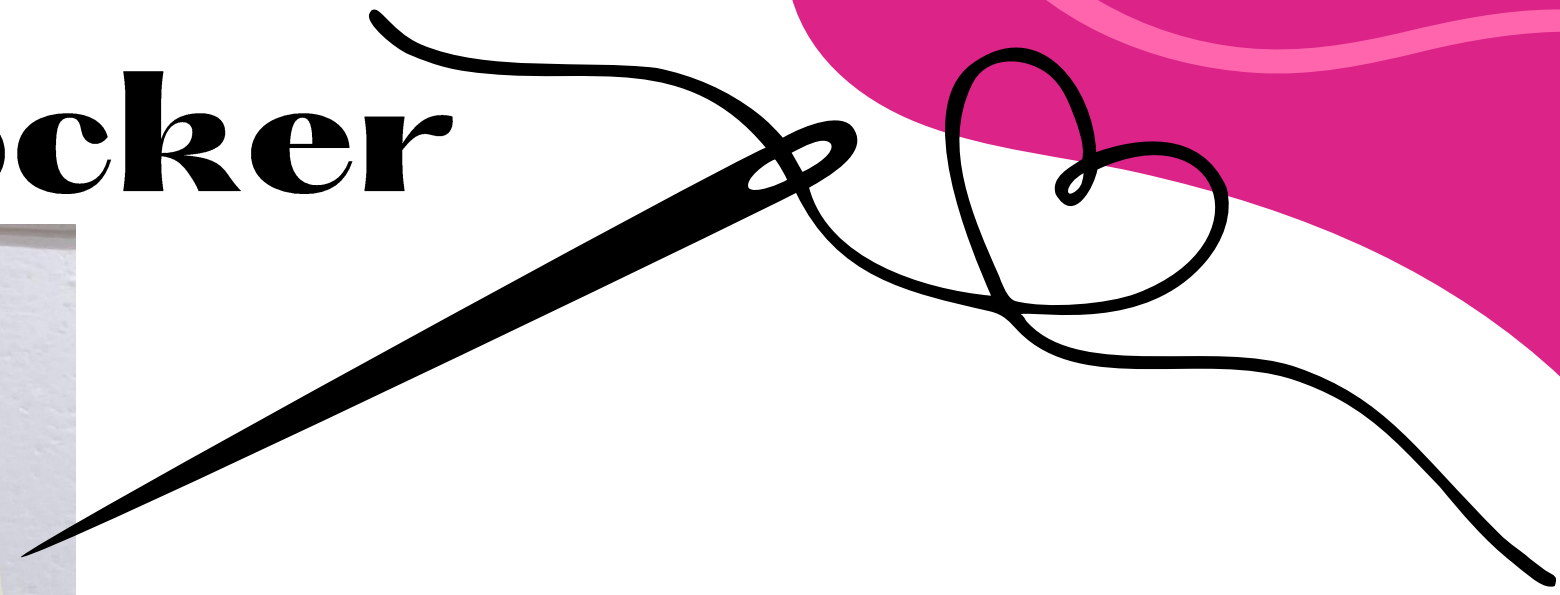
Front End of a Brother Sewing Machine



Nothing to it!



Overlocker



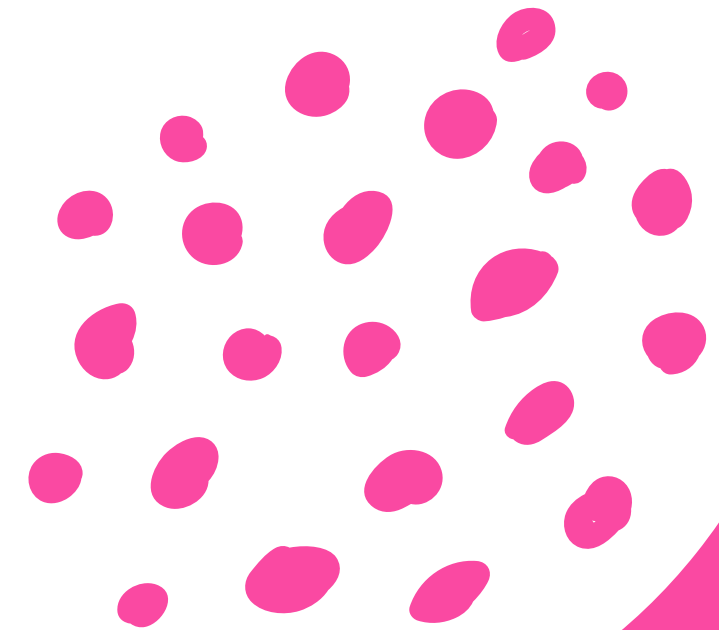
Told you it's not complicated!



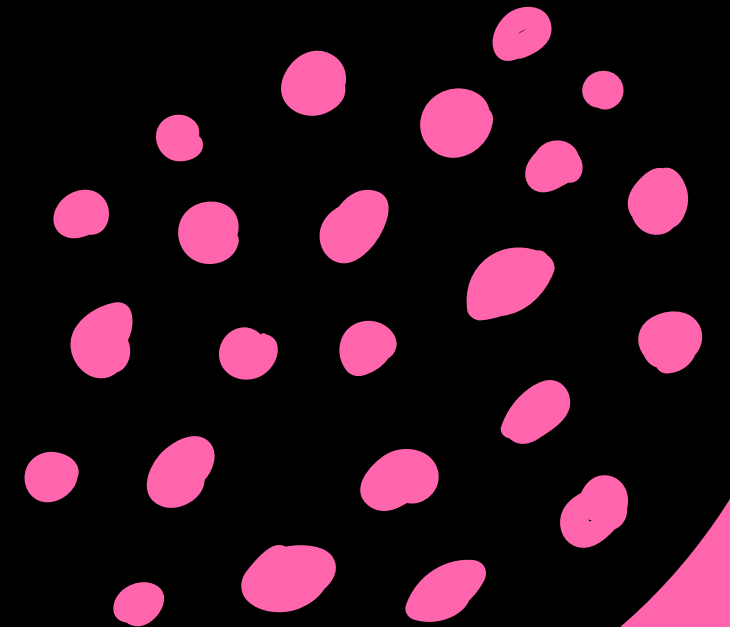
Underside of the Overlocker



You'll get used to viewing the bare bones of the machines!



**If in doubt
give Tracy a
shout!**



**THANK YOU FOR
LISTENING**

**Now onto the fun
stuff — getting
stuck in!**

